

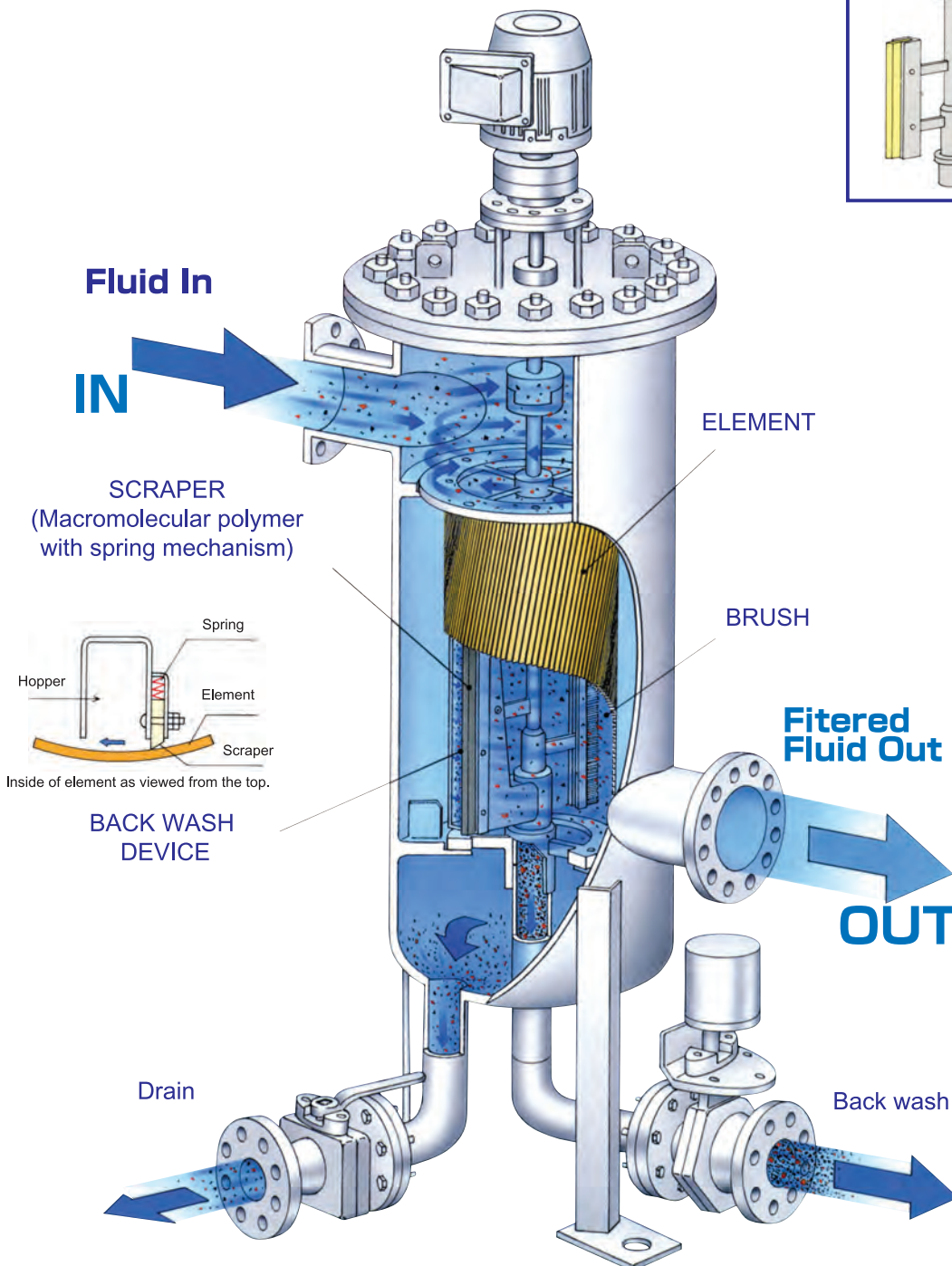
DAIDO

DNA-W_{TYPE}

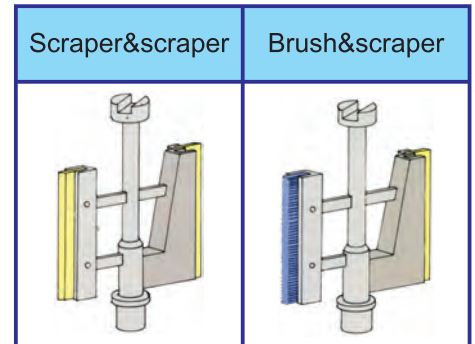
BLOWOFF BACK WASH, SCRAPING AND BRUSHING TYPE

AUTOMATIC CLEANING STRAINERS

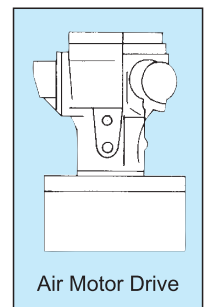
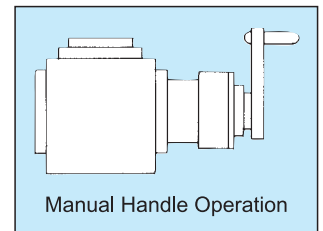
DNA-W type, which uses brushes and scrapers to restore element performance by scraping off foreign matter, with a back wash device by hopper.



CUSTOMIZED ARRANGEMENT



Drive Arrangement

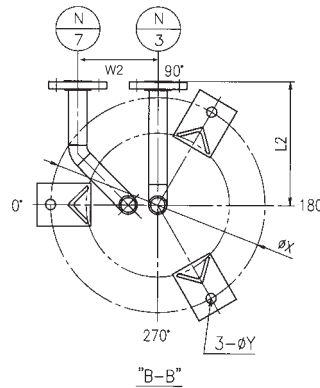
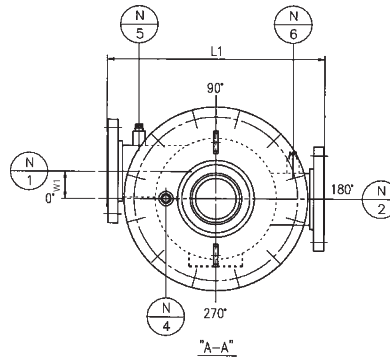
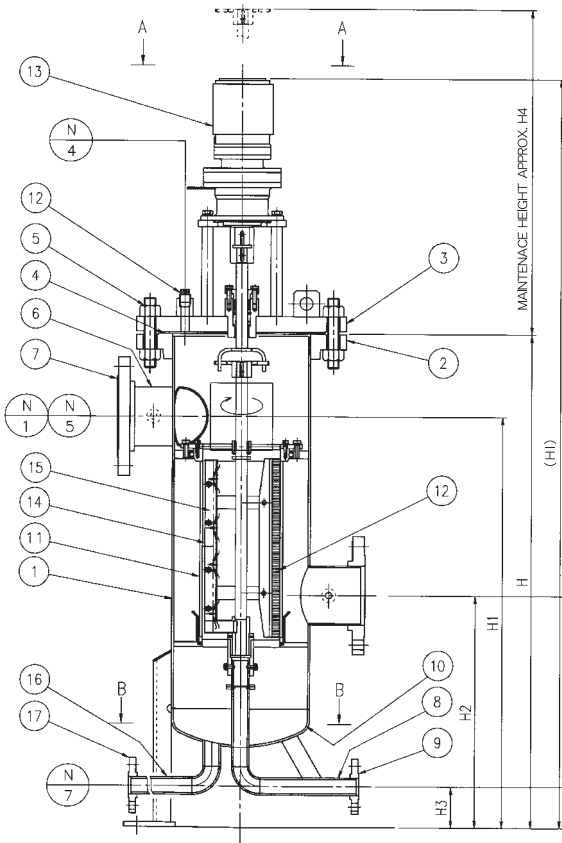
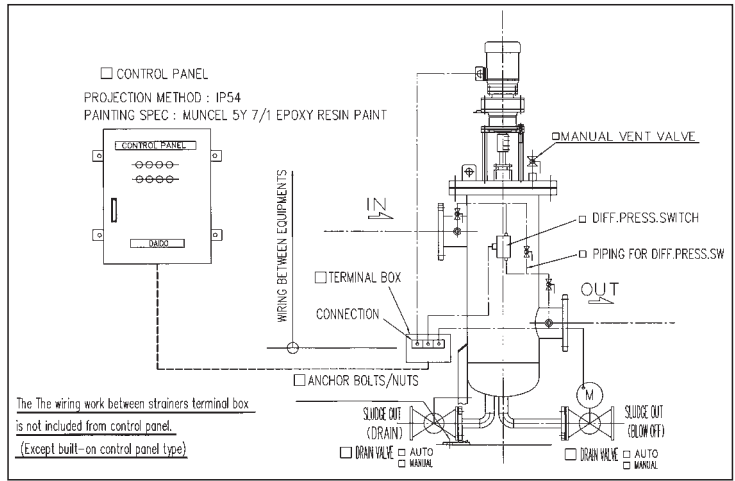


DAIDO

DAIDO

DNA-W TYPE

SCOPE OF WORK



NOZZLE LIST	
MARK	Service
N1	Inlet
N2	Outlet
N3	Back wash
N4	Vent
N5	For PG.
N6	For PG.
N7	Drain

NO.	NAME
1	Body pipe
2	Body flange
3	Cover flange
4	Gasket
5	Bolt / nut
6	Line pipe
7	Line flange
8	Back wash pipe
9	Back wash flange
10	Head
11	Element
12	Brush or Scraper
13	Geared motor
14	Hopper
15	Scraper
16	Drain pipe
17	Drain flange

DIMENSION CHART

unit:mm

MODEL No.	CONN.SIZE		L1	L2	H1	H2	H3	H4	HI	H	W1	W2	φ X	φ Y	WEIGHT(kg) 150Lb
	N1	N2													
Type2M	~ 80A	~ 3"	440	200	560	355	80	410	1125	680	50	130	330	19	99
Type2	100	4"	480	230	795	450	80	620	1455	955	60	150	400	19	174
Type3	150	6"	560	260	1000	540	90	810	1750	1200	60	170	460	19	257
Type4	200	8"	640	280	1140	600	90	950	1950	1380	50	185	520	23	343
Type5	250	10"	700	310	1370	730	100	1130	2195	1610	50	200	600	23	474
Type6M	300	12"	900	330	1490	750	100	1260	2400	1750	50	200	650	23	639
Type6	350	14"	920	380	1740	860	100	1480	2710	2060	100	220	740	23	867
Type7	400	16"	1120	450	2125	1025	120	1820	3425	2525	120	325	920	27	1325
Type8	500	20"	1400	550	2480	1130	130	2250	3965	2980	160	325	1250	35	2277
Type9	600	24"	1600	650	2860	1310	145	2530	4495	3410	200	400	1500	35	3500
Type10	650	26"	1700	750	3240	1490	145	2900	4975	3890	220	400	1600	35	4217

Please note that the dimensions for connecting flanges such as L and H1 and according to JIS ASME and other standards. There will be slight differences in these dimensions due to differences in the class used for higher flange pressures. They are capable of meeting a wide range of the CODE.

DAIDO